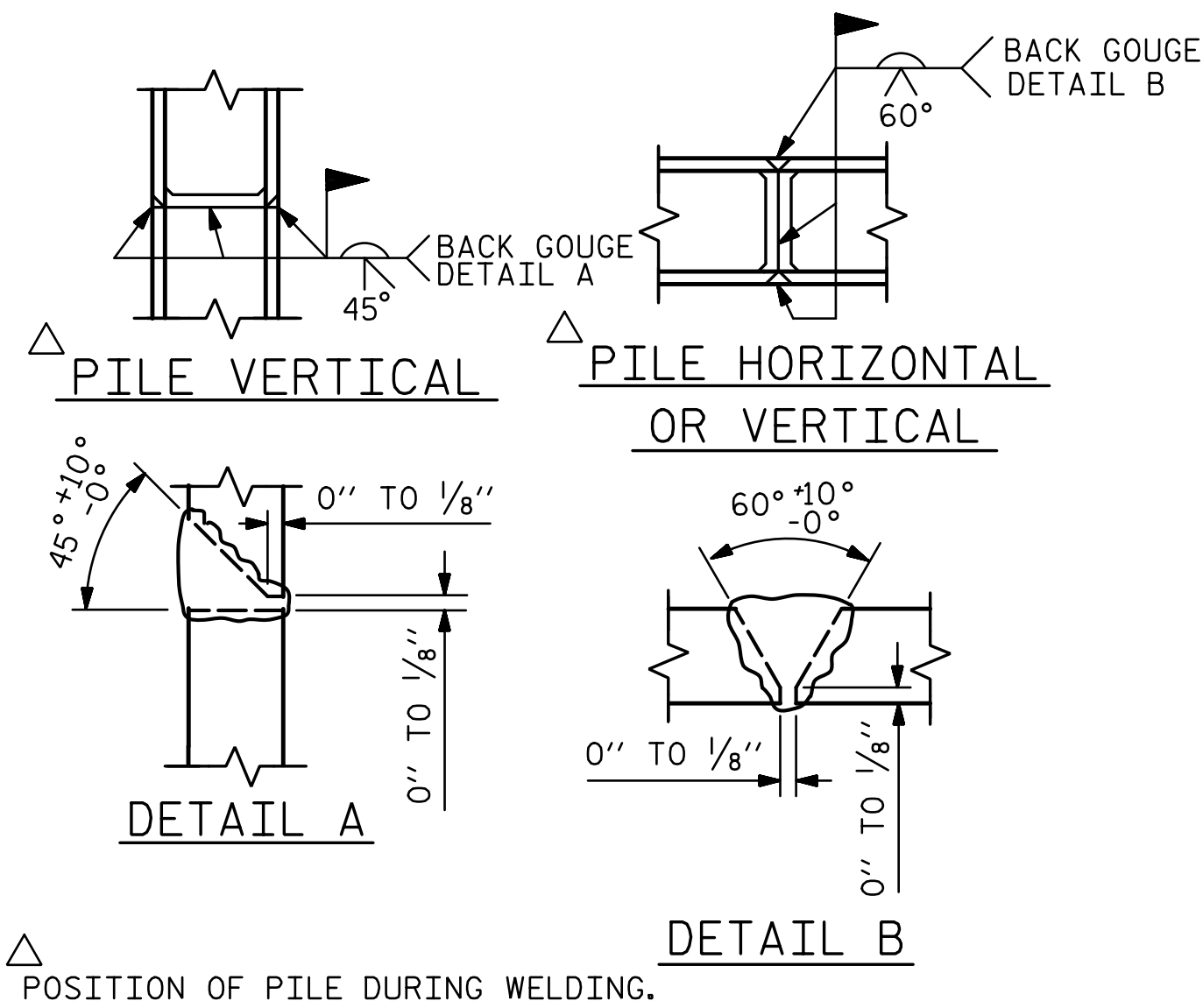


BAGGED STONE AND PIPE SHALL BE PLACED IMMEDIATELY AFTER COMPLETION OF END BENT EXCAVATION. PIPE MAY BE EITHER CONCRETE, CORRUGATED STEEL, CORRUGATED ALUMINUM ALLOY, OR CORRUGATED PLASTIC. PERFORATED PIPE WILL NOT BE ALLOWED.

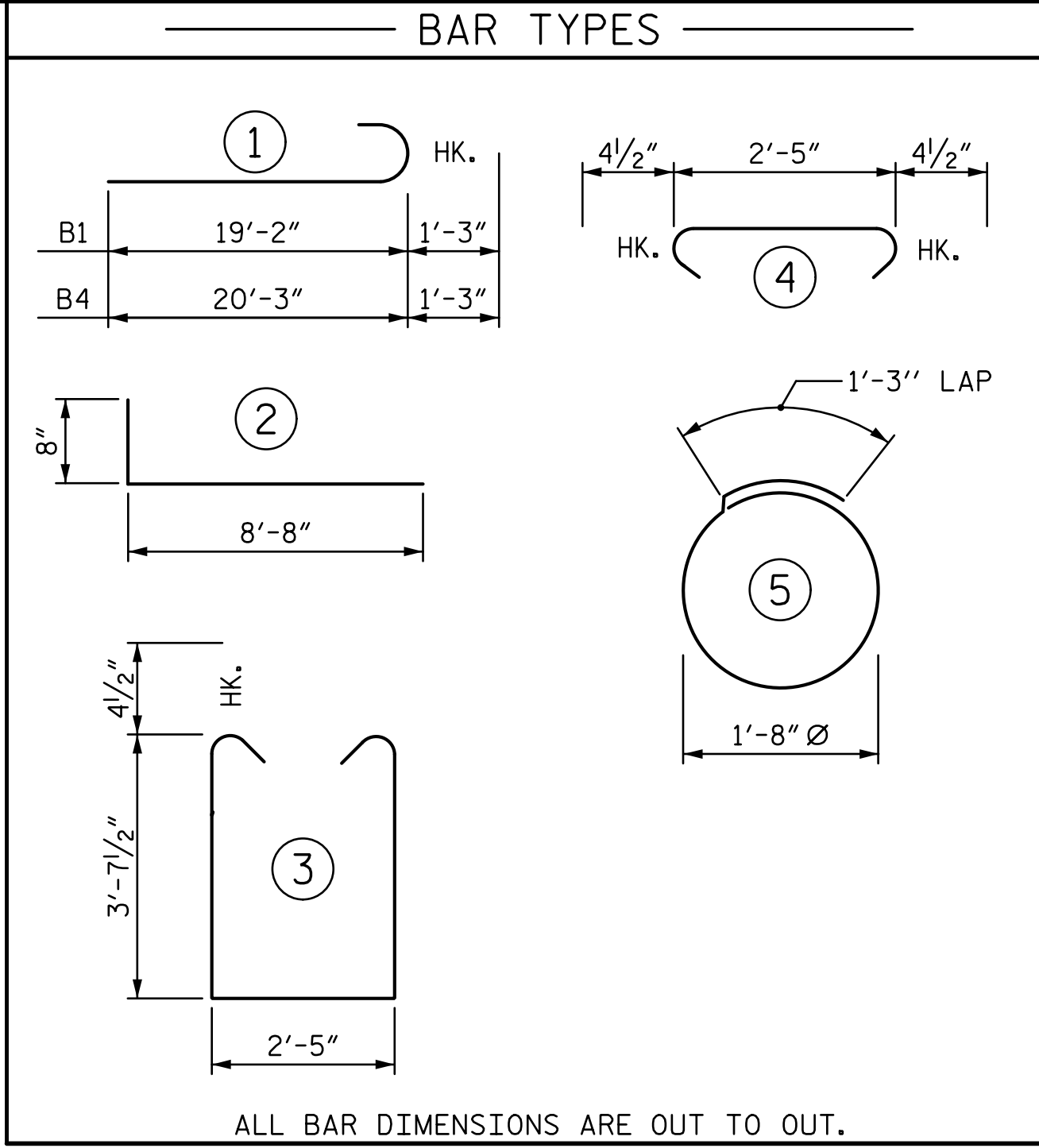
BAGGED STONE SHALL REMAIN IN PLACE UNTIL THE ENGINEER DIRECTS THAT IT BE REMOVED. THE CONTRACTOR SHALL REMOVE AND DISPOSE OF SILT ACCUMULATIONS AT BAGGED STONE WHEN SO DIRECTED BY THE ENGINEER. BAGS SHALL BE REMOVED AND REPLACED WHENEVER THE ENGINEER DETERMINES THAT THEY HAVE DETERIORATED AND LOST THEIR EFFECTIVENESS.

NO SEPARATE PAYMENT WILL BE MADE FOR THIS WORK AND THE ENTIRE COST OF THIS WORK SHALL BE INCLUDED IN THE UNIT CONTRACT PRICE BID FOR THE SEVERAL PAY ITEMS.

TEMPORARY DRAINAGE AT END BENT



PILE SPLICE DETAILS

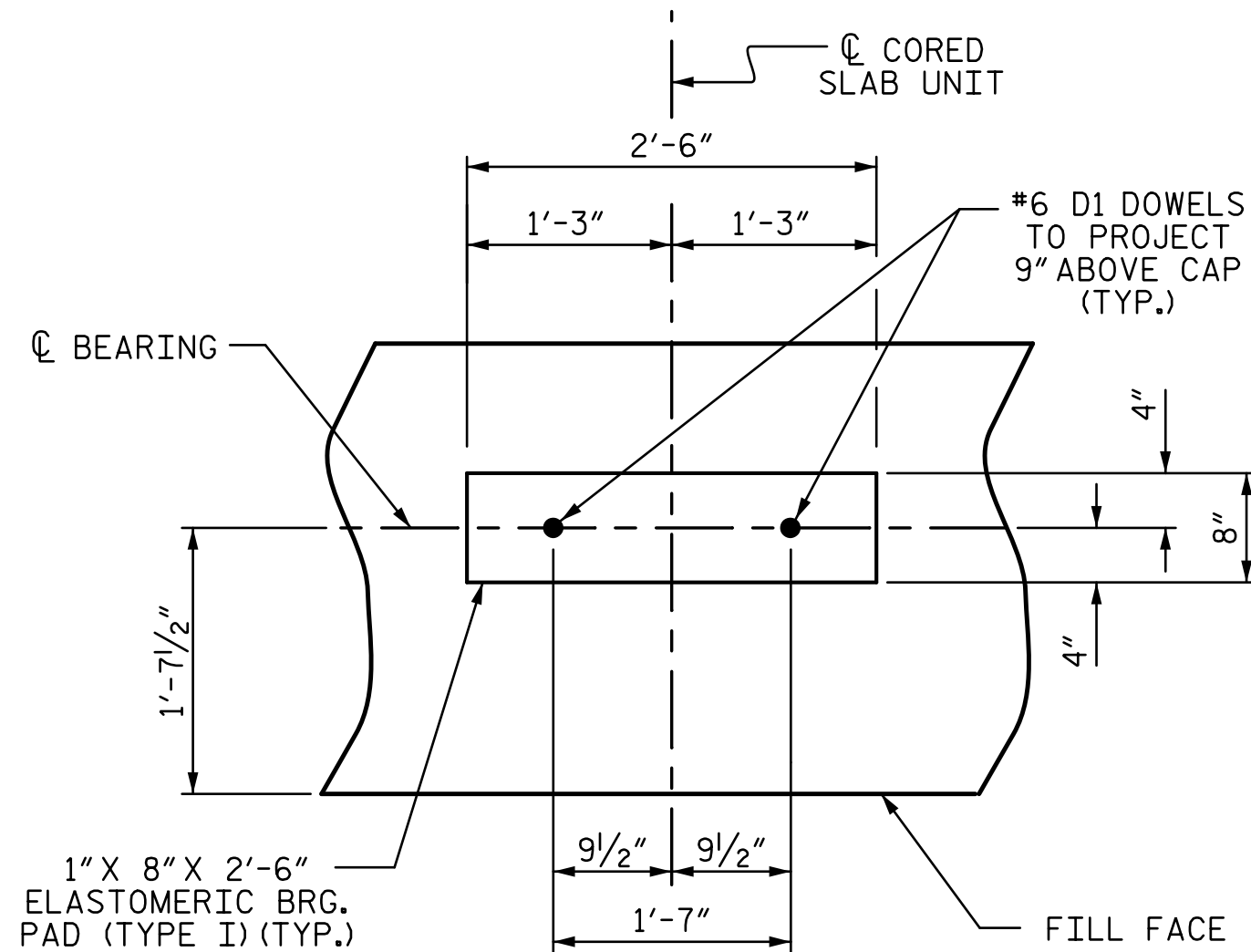


BILL OF MATERIAL						BILL OF MATERIAL					
END BENT 1 (STAGE 3)						END BENT 1 (STAGE 5)					
BAR	NO.	SIZE	TYPE	LENGTH	WEIGHT	BAR	NO.	SIZE	TYPE	LENGTH	WEIGHT
† B1	8	#9	1	20'-5"	555	B3	6	#4	STR	2'-5"	10
* B2	14	#4	STR	20'-7"	192	B4	8	#9	1	21'-6"	585
B3	5	#4	STR	2'-5"	8	B5	14	#4	STR	20'-4"	190
D1	10	#6	STR	1'-6"	23	D1	12	#6	STR	1'-6"	27
H1	20	#4	2	9'-4"	125	H1	20	#4	2	9'-4"	125
K1	8	#4	STR	2'-11"	16	K1	8	#4	STR	2'-11"	16
S1	23	#4	3	10'-5"	160	S1	27	#4	3	10'-5"	188
S2	23	#4	4	3'-2"	49	S2	27	#4	4	3'-2"	57
S3	12	#4	5	6'-6"	52	S3	16	#4	5	6'-6"	69
V1	26	#4	STR	6'-1"	106	V1	26	#4	STR	6'-1"	106
REINFORCING STEEL (FOR ONE END BENT)					1,286 LBS.	REINFORCING STEEL (FOR ONE END BENT)					1,373 LBS.
CLASS A CONCRETE BREAKDOWN						CLASS A CONCRETE BREAKDOWN					
POUR #1 CAP, LOWER PART OF WINGS & COLLARS					9.2 C.Y.	POUR #1 CAP, LOWER PART OF WINGS & COLLARS					10.1 C.Y.
POUR #2 UPPER PART OF WINGS					1.1 C.Y.	POUR #2 UPPER PART OF WINGS					1.1 C.Y.
TOTAL CLASS A CONCRETE					10.3 C.Y.	TOTAL CLASS A CONCRETE					11.2 C.Y.
TOTAL REINFORCING STEEL					2,659 LBS.	TOTAL REINFORCING STEEL					2,659 LBS.
TOTAL CLASS A CONCRETE					21.5 C.Y.	TOTAL CLASS A CONCRETE					21.5 C.Y.

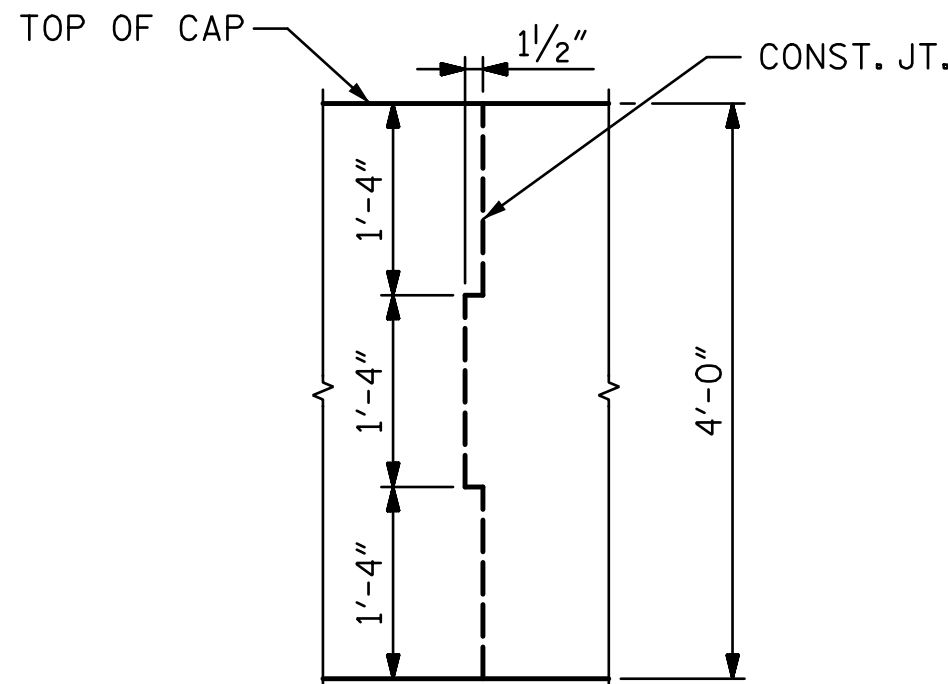
NOTE:
FOR DETAILS ON CONSTRUCTION STAGING, SEE CONSTRUCTION STAGING SHEETS.

† BAR LENGTH IS BASED ON "B" BAR PROJECTING FROM THE CONSTRUCTION JOINT 1'-0" FOR MECHANICAL SPLICE. BAR LENGTH MAY NEED TO BE INCREASED PER MANUFACTURER'S RECOMMENDATIONS.

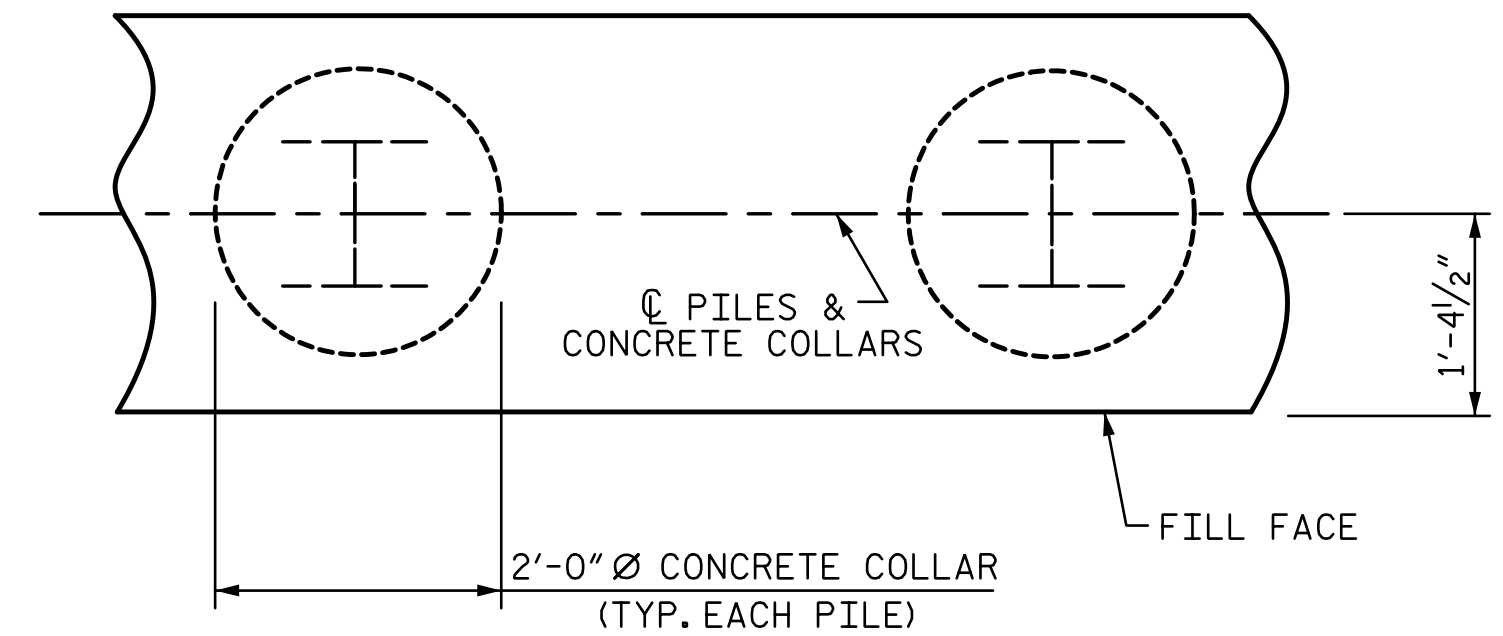
* BARS ARE DETAILED WITH ADEQUATE LENGTH FOR A SPLICE. MECHANICAL REBAR SPLICES WILL BE REQUIRED IF THE TEMPORARY SHORING LOCATION DOES NOT ALLOW FOR MIN. REQUIRED SPLICE LENGTH. ALL COSTS ASSOCIATED WITH MECHANICAL BAR SPLICES SHALL BE CONSIDERED INCIDENTAL TO THE REINFORCING STEEL. NO ADDITIONAL PAYMENT WILL BE MADE.



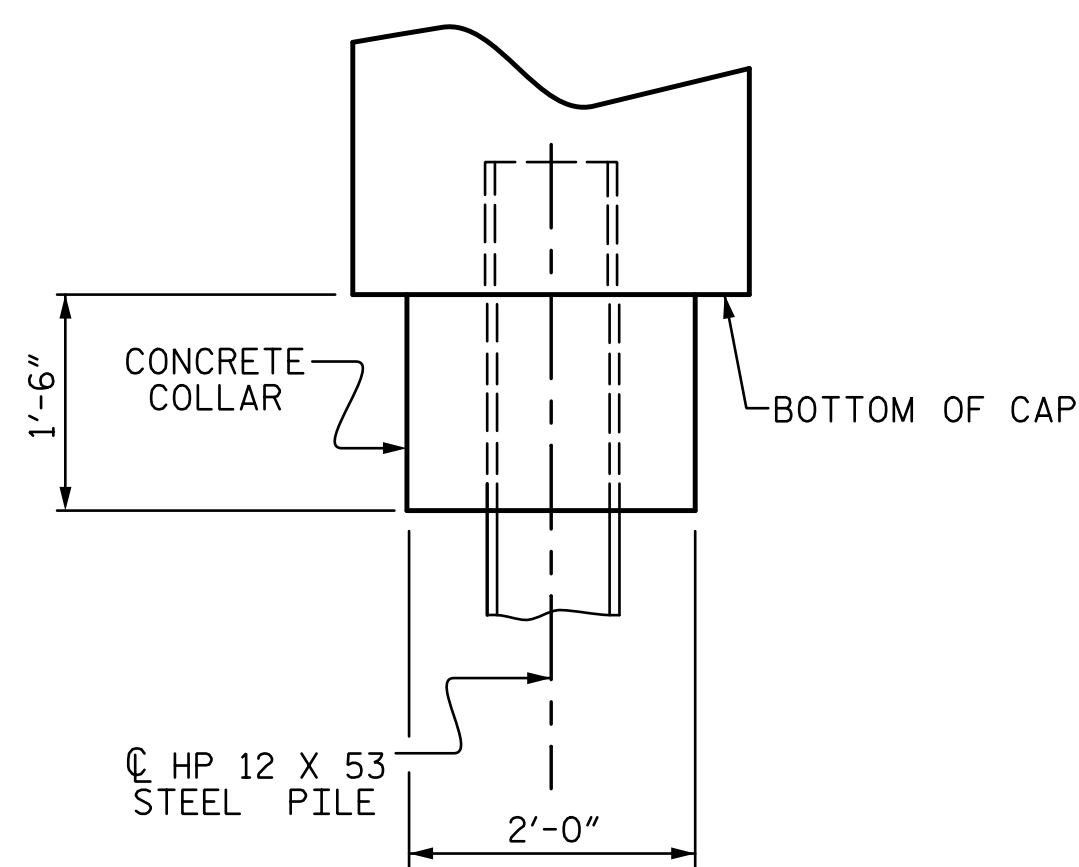
DETAIL "A"



CONST. JT. DETAIL

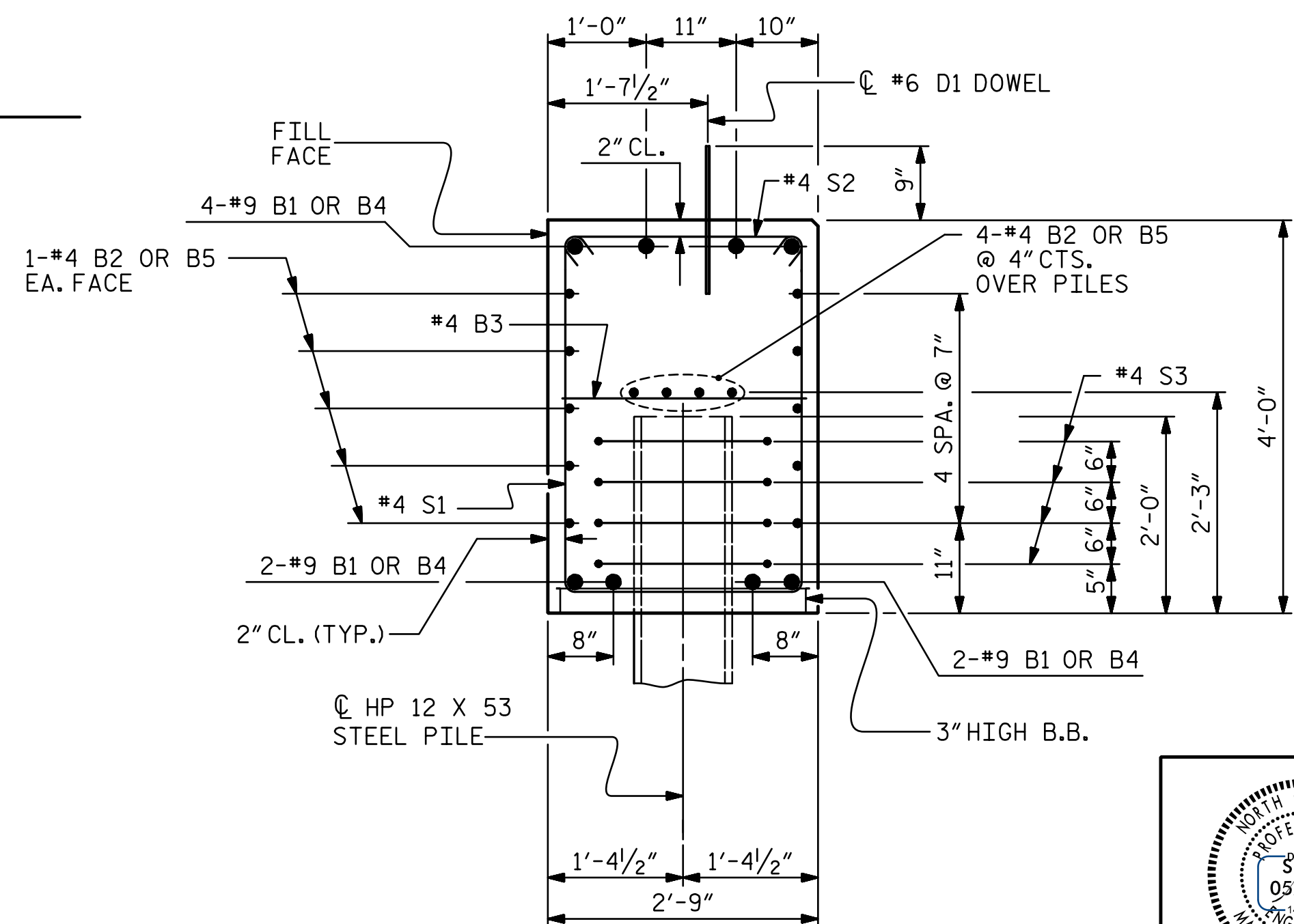


PLAN



ELEVATION

CORROSION PROTECTION FOR STEEL PILES DETAIL



SECTION A-A

(CONCRETE COLLAR NOT SHOWN FOR CLARITY. SEE "CORROSION PROTECTION FOR STEEL PILES DETAIL.")

PROJECT NO. DF18314.2045332
HENDERSON COUNTY
STATION: 13+70.81 -L-

SHEET 3 OF 3



STATE OF NORTH CAROLINA DEPARTMENT OF TRANSPORTATION RALEIGH					
SUBSTRUCTURE					
END BENT 1 DETAILS					
REVISIONS					SHEET NO.
NO.	BY:	DATE:	NO.	BY:	DATE:
1			3		
2			4		
TOTAL SHEETS					32

DRAWN BY :	J. SCACCA	DATE :	01/2025
CHECKED BY :	M. ACOSTA	DATE :	01/2025
DESIGN ENGINEER OF RECORD:	M. ACOSTA	DATE :	03/2026

DOCUMENT NOT CONSIDERED
FINAL UNLESS ALL
SIGNATURES COMPLETED